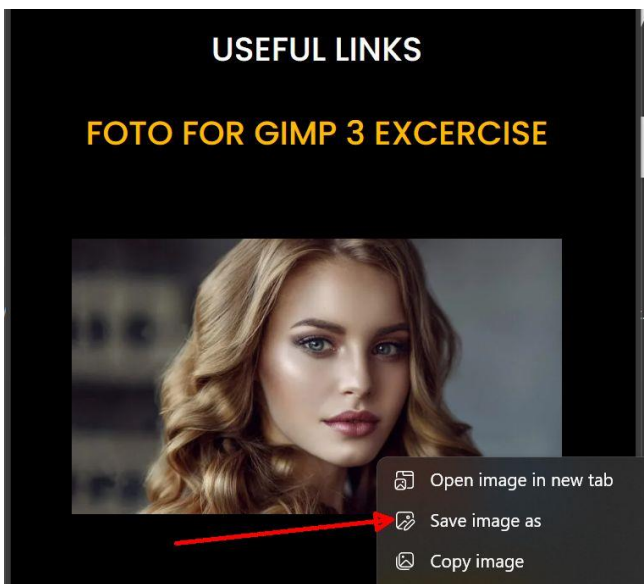


Summary

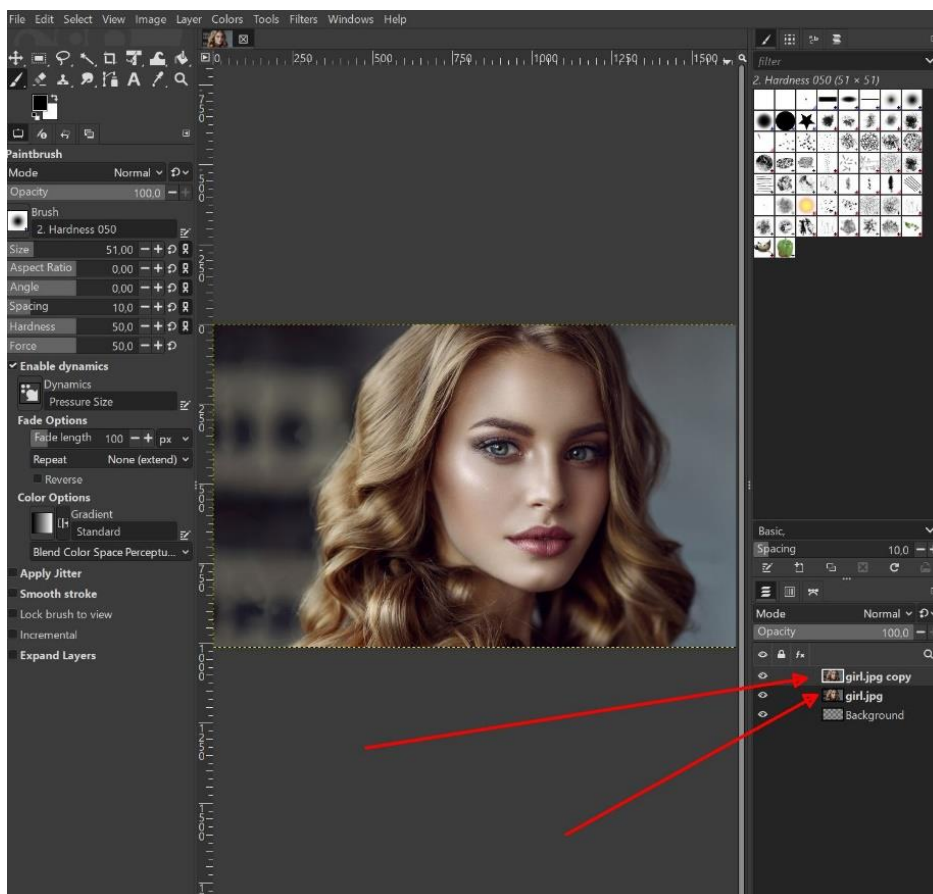
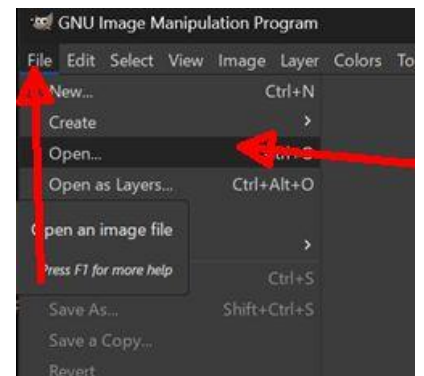
This tutorial guides you through **creating a classic color-to-black-and-white masked effect in GIMP 3.0**. You will learn how to **open and duplicate your photo, convert the duplicate to grayscale, add a layer mask, and then use both the Paintbrush and Gradient tools to reveal color selectively**. All menu names and tool options correspond exactly to GIMP 3.0, as documented in the official manual, ensuring you can follow along without confusion.



Step 1: Download and open the picture

Go to <https://italiadigitalweb.it/erasmus> and Download the picture “Girl.jpg”

- **Open and Duplicate Your Image**
- **Open your photo**
- Go to **File** → **Open...** (or press **Ctrl+O**) to bring up the Open Image dialog and select your image file from the download folder, called girl.jpg

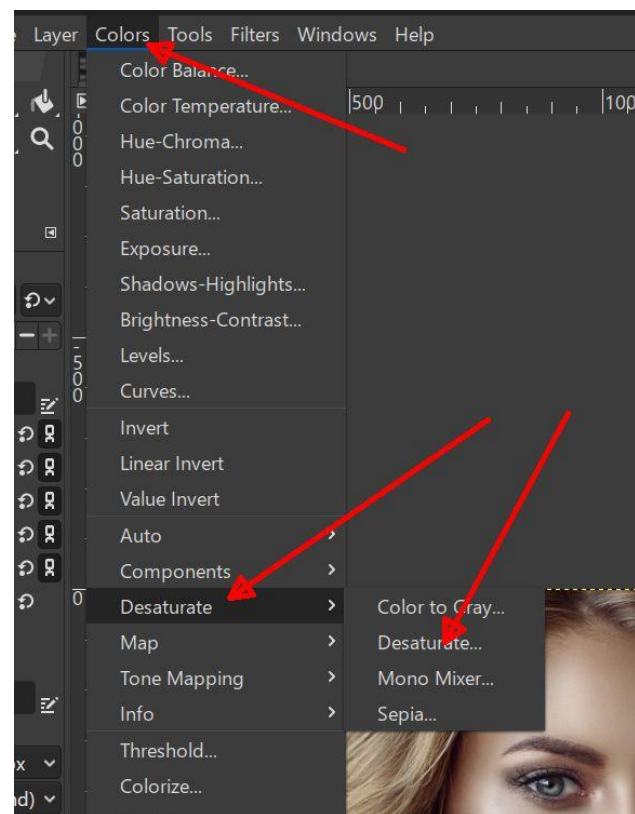
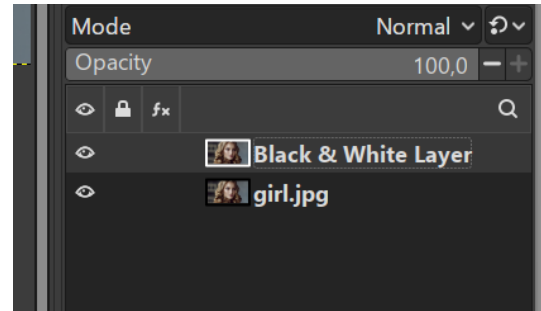
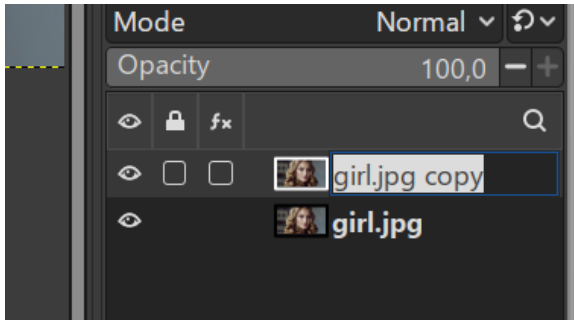


- **Duplicate the active layer**
- In the **Layers** panel, right-click on your photo's layer and choose **Duplicate Layers** (or use **Layer** → **Duplicate Layers**) to create an identical copy named “girl.jpg copy”

Step 2: Rename the Copied Layer

1. Rename for clarity

- Double-click on the new layer's name in the Layers panel (or right-click and select **Edit Layer Attributes...**) to enter a descriptive name like **Black & White Layer**



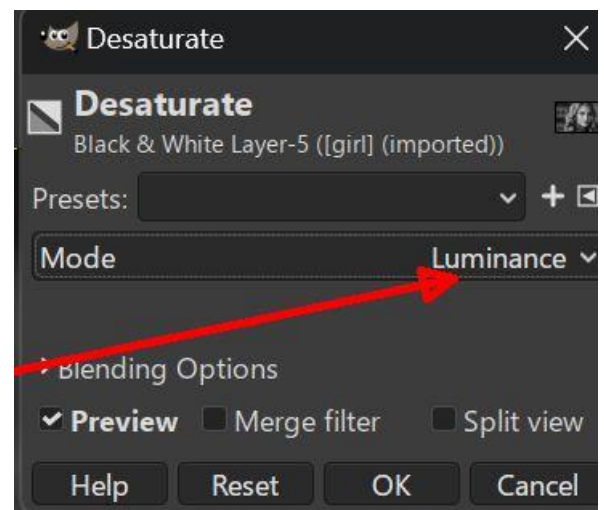
Step 3: Desaturate the Copied Layer

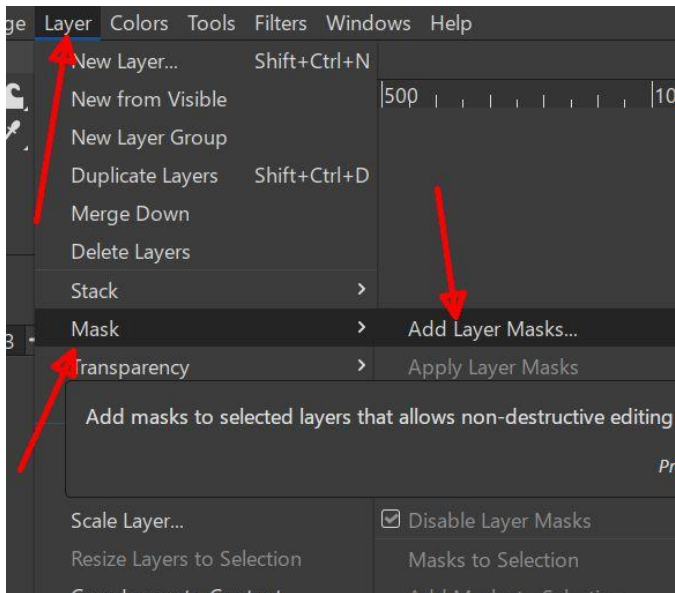
1. Convert to grayscale

- With your **Black & White Layer** selected, navigate to **Colors** → **Desaturate** → **Desaturate...**

2. Choose a mode

- In the dialog, select **Luminance** (recommended for natural tones) and click **OK** to turn the layer into shades of gray

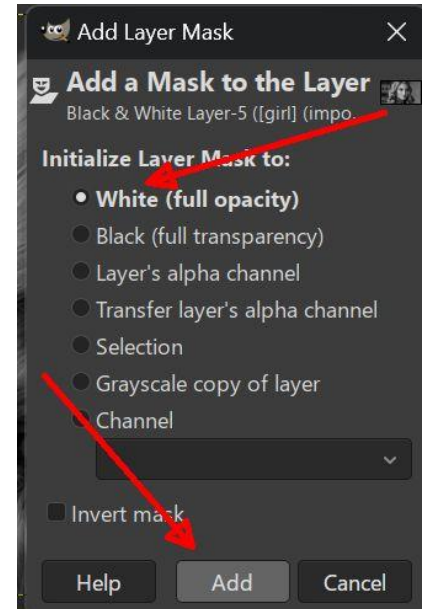




Step 4: Add a Layer Mask

1. Attach a mask

- Ensure **Black & White Layer** is active, then go to **Layer** → **Mask** → **Add Layer Masks...**

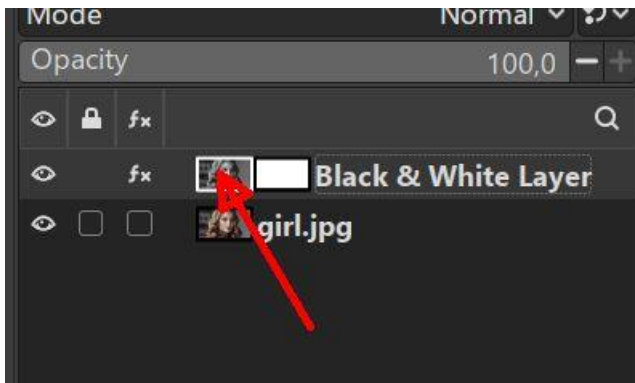


2. Initialize to white

- In the dialog, choose **White (full opacity)** so the entire layer remains visible initially, then click **Add**

Step 5: How Mask Colors Work

1. Select the mask



- Click on the mask thumbnail beside your layer until it shows a white border—this ensures you paint on the mask, not the image

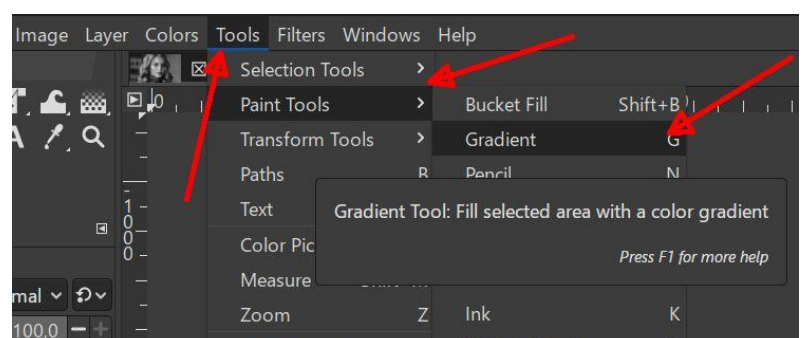
2. Painting rules

- **Black** paint hides the grayscale layer (revealing color beneath), **White** restores it, and **Gray** yields semi-transparency

Step 6: Apply a Gradient Mask

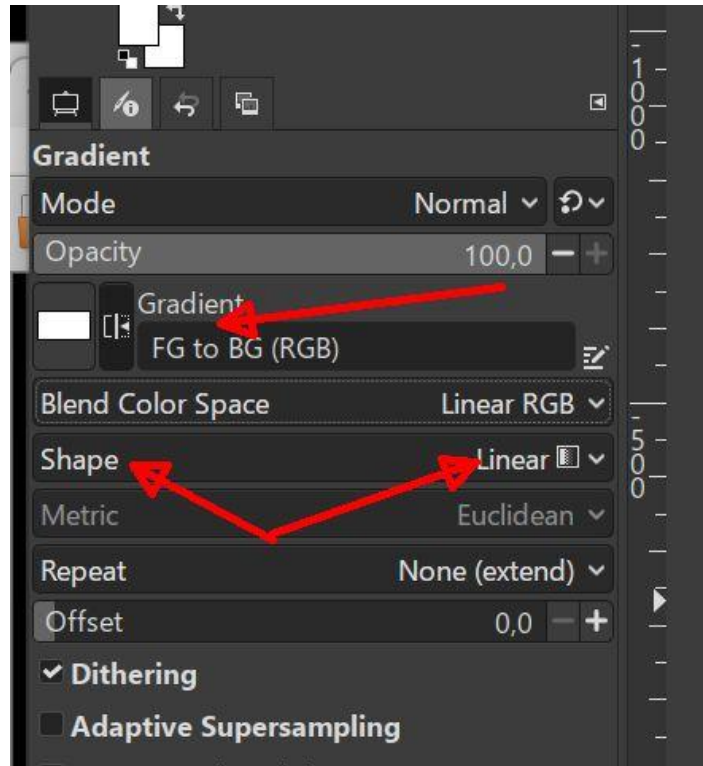
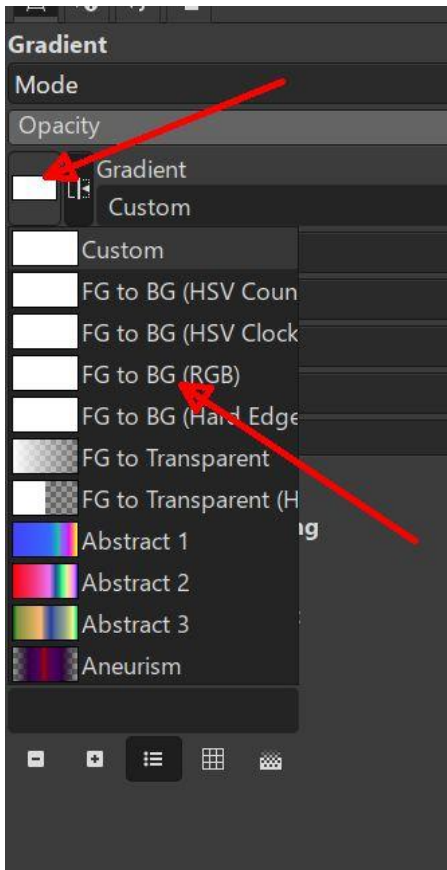
1. Activate the Gradient tool

- Select **Tools** → **Paint Tools** → **Gradient** (or press **G**).



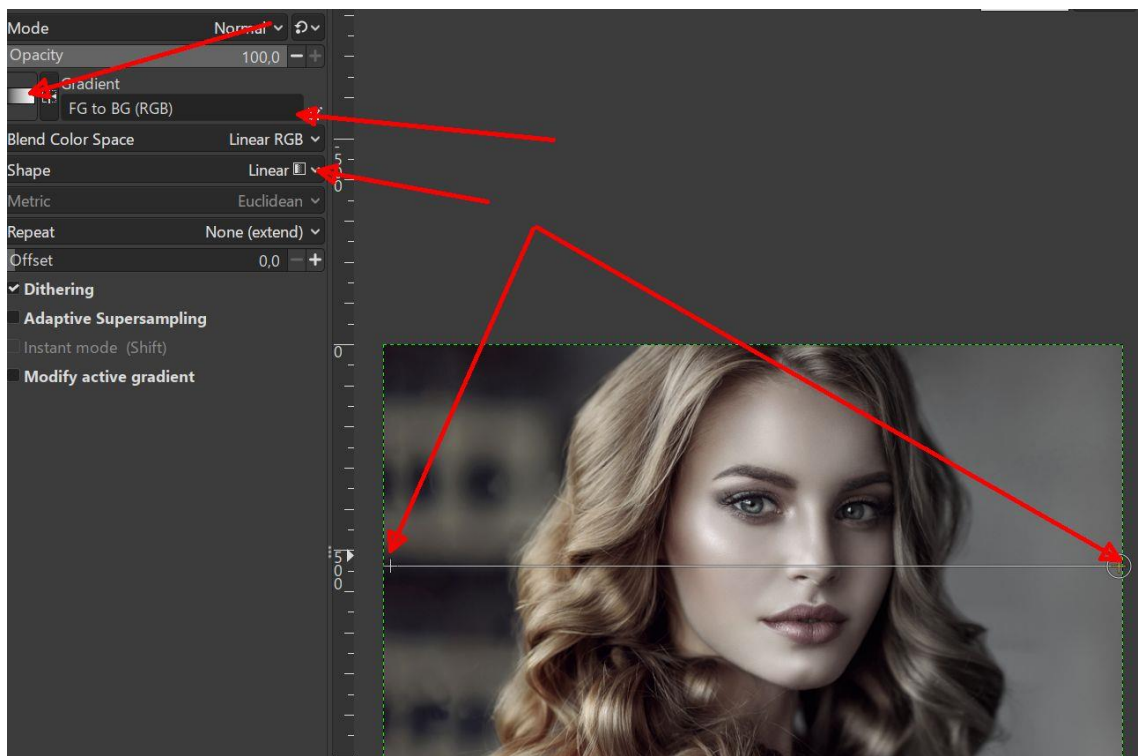
2. Set options

- In Tool Options, ensure **Gradient: FG to BG (RGB)** and **Shape: Linear** are chosen

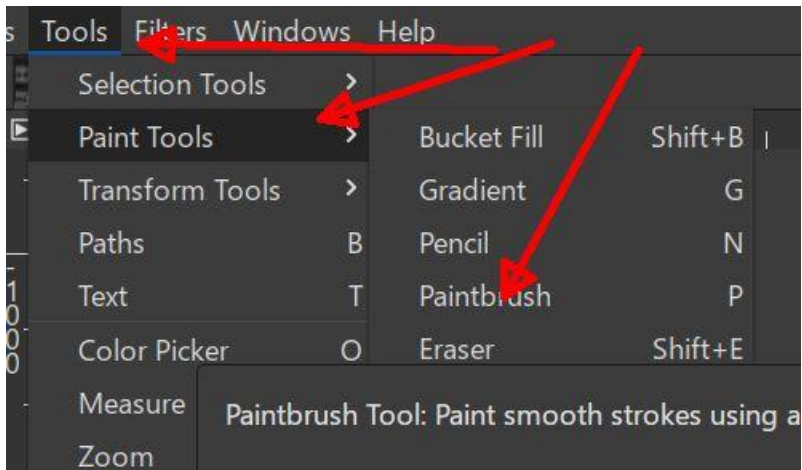


3. Draw the gradient

- With the mask thumbnail active, click and drag across your image to create a smooth fade from color to black-and-white

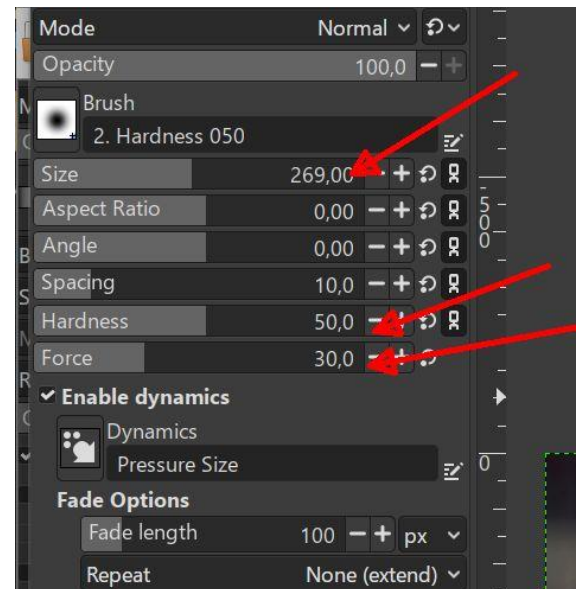


Step 7: Refine with the Paintbrush



1. Switch to Paintbrush

- Choose **Tools** → **Paint Tools** → **Paintbrush** (shortcut **P**) to get a soft, fuzzy brush

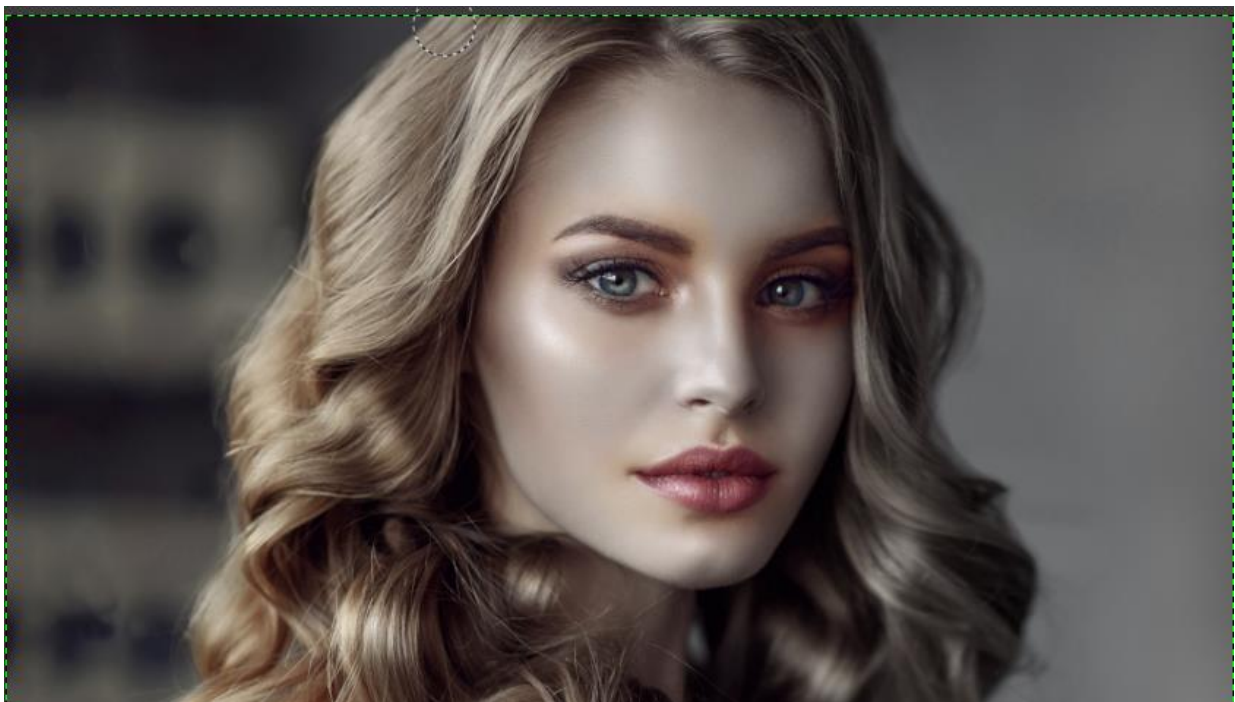


2. Adjust brush settings

- In the Tool Options, tweak **Size**, **Hardness**, and **Opacity** (Force) sliders for precise control

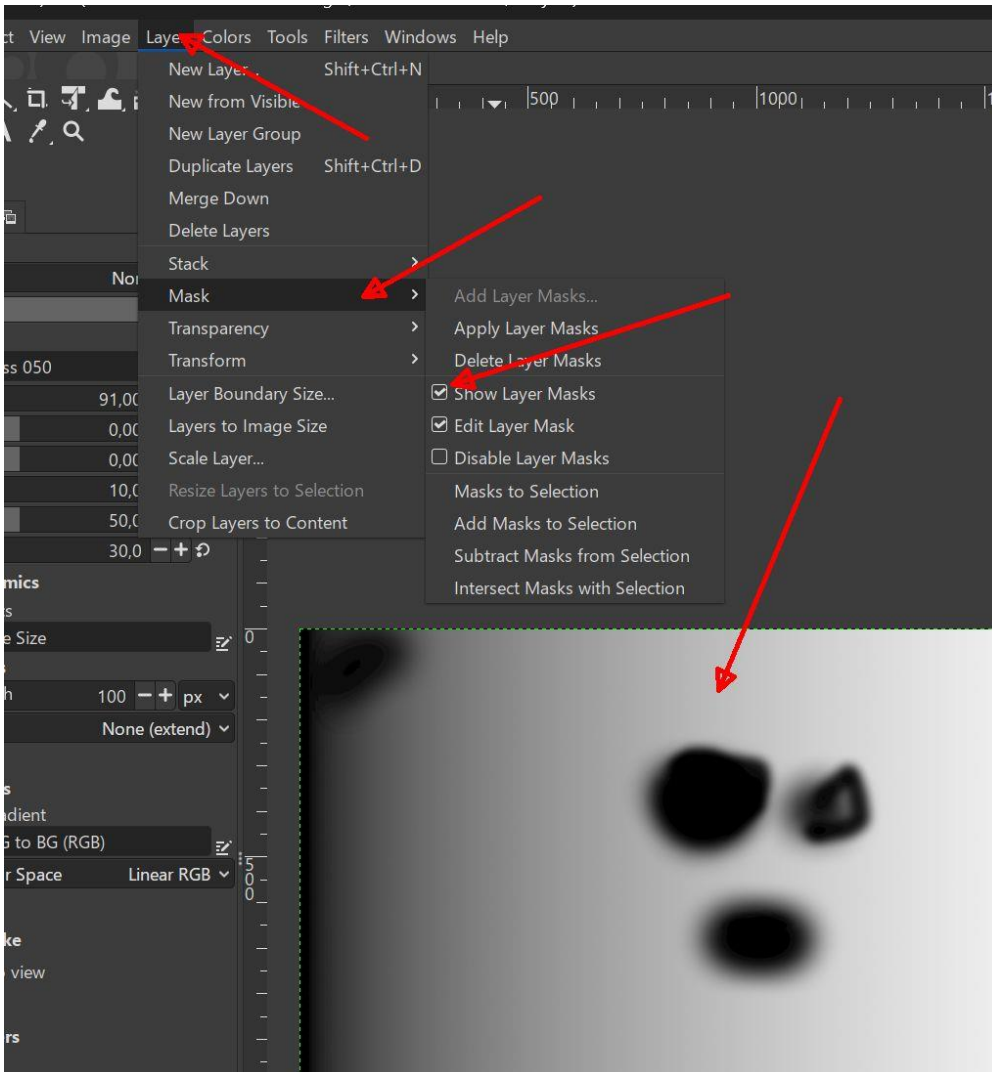
3. Detail work

- Paint **black** on the mask where you want full color accents (e.g., eyes or an object), **white** to re-mask, and **gray** for gentle blends.
-



Step 8: Final Steps and Saving

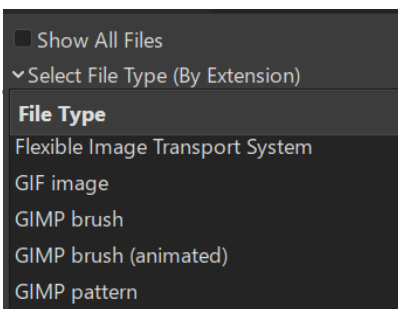
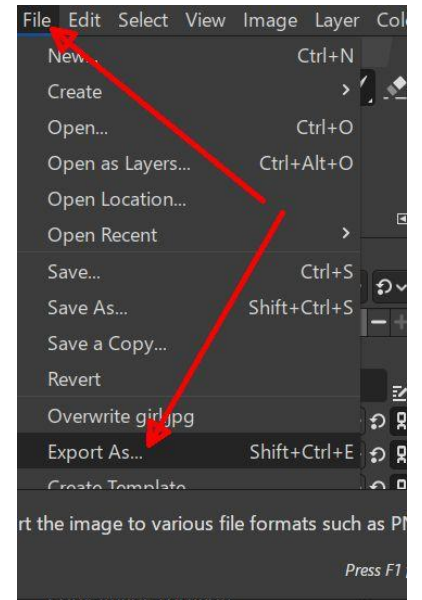
- o Toggle mask visibility



o Use **Layer** → **Mask** → **Show Layer Masks** to preview mask shapes without altering the mask itself.

Save your work

o When satisfied, export the image with **File** → **Export As...** choosing your preferred format (e.g., PNG or JPEG).



Tip: Experiment with painting on the mask using different shades of gray for nuanced transparency and with selection tools plus **Edit** → **Fill** (FG/BG Color) to mask large areas quickly. Happy editing!

